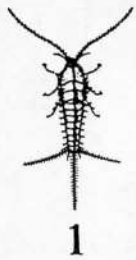
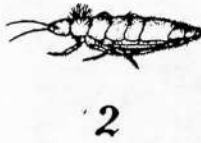


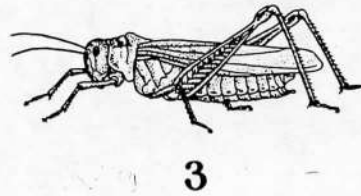
TURTOX KEY CARD
for
Orders of Insects



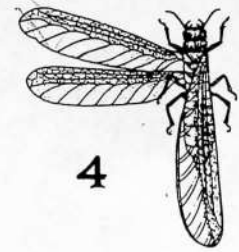
1



2



3



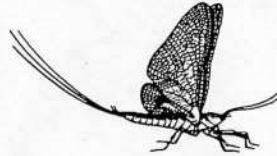
4



5



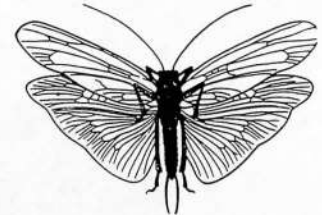
10



6



7



8



9



11



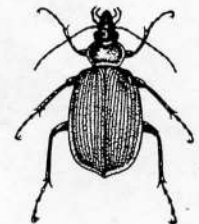
12



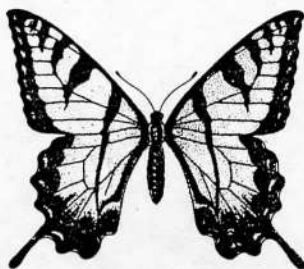
13



14



15



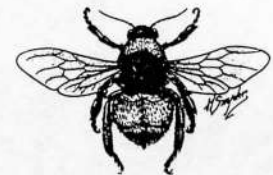
17



18



19



20

1. SILVERFISH
ORDER THYSANURA
Silverfish
2. SPRINGTAIL
ORDER COLLEMBOLA
Springtails
3. GRASSHOPPER
ORDER ORTHOPTERA
Locusts, Crickets, Cockroaches
4. TERMITE
ORDER ISOPTERA
"White-ants"
5. ANTLION
ORDER NEUROPTERA
Antlions

6. MAYFLY
ORDER EPHEMERIDA
Mayflies
7. DRAGONFLY
ORDER ODONATA
Dragonflies, Damselflies
8. STONEFLY
ORDER PLECOPTERA
Stoneflies
9. BOOK-LOUSE
ORDER PSOPTERA
Book-lice, Bark-lice
10. CHICKEN-LOUSE
ORDER MALLOPHAGA
Biting-lice

11. HEAD-LOUSE
ORDER ANOPLURA
Sucking-lice
12. GIANT WATER-BUG
ORDER HEMIPTERA
Water-bugs, Squash-bugs
13. CICADA
ORDER HOMOPTERA
Cicadas, Aphids, Scale-insects
14. EARWIG
ORDER DERMAPTERA
Earwigs
15. GROUND BEETLE
ORDER COLEOPTERA
Beetles

16. CADDICEFLY
ORDER TRICHOPTERA
Caddiceflies
17. SWALLOWTAIL
ORDER LEPIDOPTERA
Moths, Butterflies
18. HOUSEFLY
ORDER DIPTERA
Two-winged flies
19. FLEA
ORDER SIPHONAPTERA
Fleas
20. BUMBLEBEE
ORDER HYMENOPTERA
Gallflies, Wasps, Bees, Ants

WARD'S

WARD'S Natural Science Establishment, Inc.
5100 West Henrietta Road
P.O. Box 92912
Rochester, New York 14692-9012

Copyright 1992 Printed in U.S.A. 33W0837